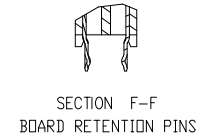
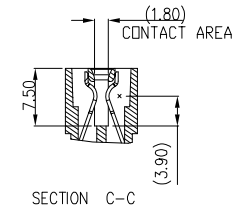
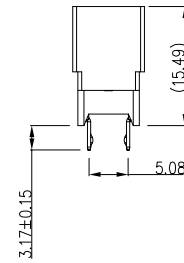
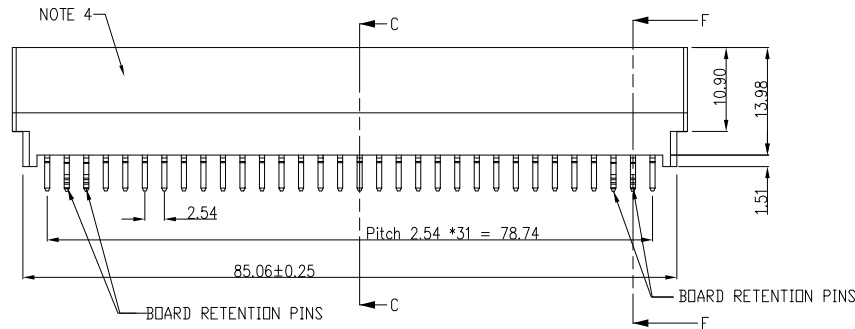
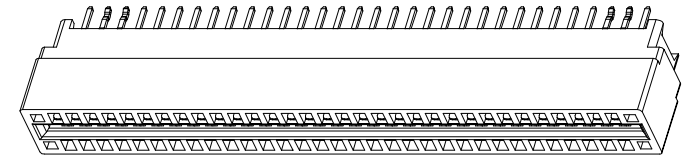
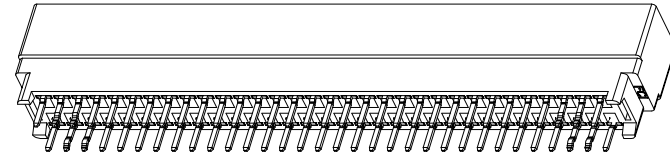
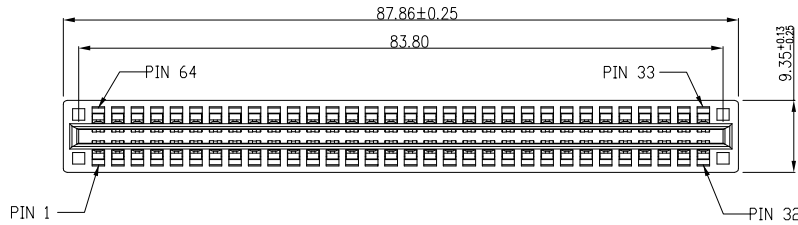


PRODUCT NO
10046971-001LF

REV	ECR NUMBER	REV'D BY	DATE
E	DG06-0306	RYAN YUAN	08/04/06
F	DG06-0524	JULIA WANG	12/26/06
C	DG05-0287	Steven Wang	08/18/05
D	DG05-0461	JM Guo	11/14/05



NOTE:
1. MATERIAL:
HOUSING: HIGH TEMPERATURE THERMOPLASTIC,
UL 94 V-0 FLAME RETARDANT, BLACK.
TERMINAL: HIGH CONDUCTIVITY COPPER ALLOY.
PLATING SPEC AS BELOW:
Ni 50u" UNDER PLATED.
Au 30u" OVER CONTACT AREA. (ONE SIDE)
MATTE TIN 120u" OVER SOLDERING AREA.

2. PACKING SPEC. GS-14-937.
3. PRODUCT SPEC. GS-12-338.
4. MANUFACTURER'S NAME, P/N AND DATE CODE TO APPEAR ON THIS SURFACE
AS PER GS-24-007.

5. PART NUMBER 10046971-001LF MEETS EUROPEAN UNION DIRECTIVE AND OTHER COUNTRY
REGULATIONS AS DESCRIBED IN GS-22-008.
THE HOUSING WILL WITHSTAND EXPOSURE TO 260°C PEAK TEMPERATURE FOR 10 SECONDS IN A
WAVE SOLDER APPLICATION WITH A CIRCUIT BOARD.

ALL RIGHT RESERVED. REPRODUCTION OR ISSUE TO THIRD PARTIES IN ANY FORM WHATEVER IS NOT PERMITTED WITHOUT
WRITTEN AUTHORITY FROM THE PROPRIETOR. PROPERTY OF F C I. COPYRIGHT F C I.

CUSTOMER COPY			THIRD ANGLE PROJECTION			FCI				
DO NOT SCALE DRAWING			DIMENSIONAL LIMITS APPLY AFTER PLATING (IF SPECIFIED)			DESCRIPTION				
GENERAL TOLERANCE			NAME			POWER EDGE CONNECTOR OF VERTICAL TYPE (32PX2)				
MILLIMETER	INCH	ANGLE	DRAWN	Benny Chen	DATE	SCALE	SIZE	DRAWING NO.	REV	SHEET
X.X ±0.8	.XX ±0.03	±3°	CHECKED	Paul Wang	03/20/05	1:1	A4	10046971	F	1 OF 4
X.XX ±0.25	.XXX ±0.010		APPROVED	Joseph Hsia	03/23/05					
X.XXX ±0.13	.XXXX ±0.005									

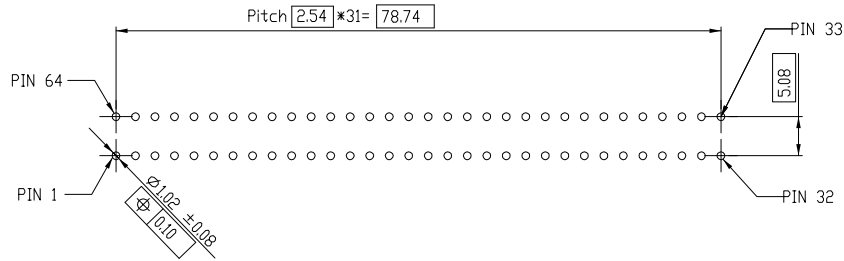
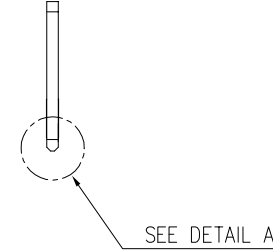
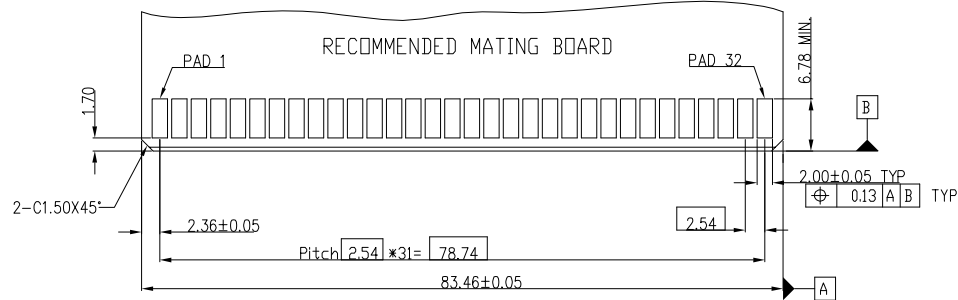
PDM: Rev:F

STATUS:Released

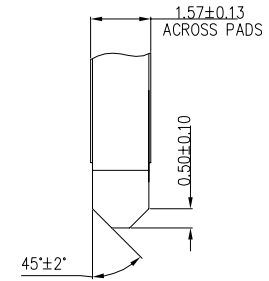
Printed: Mar 14, 2007

PRODUCT NO
10046971-001LF

4 3 2 1



RECOMMENDED PCB BOARD LAYOUT
AND THE THICKNESS IS 2.36mm



DETAIL A
SCALE 5:1

ALL RIGHT RESERVED. REPRODUCTION OR ISSUE TO THIRD PARTIES IN ANY FORM WHATEVER IS NOT PERMITTED WITHOUT WRITTEN AUTHORITY FROM THE PROPRIETOR. PROPERTY OF F C I. COPYRIGHT F C I.

CUSTOMER COPY			THIRD ANGLE PROJECTION										
											DO NOT SCALE DRAWING		
GENERAL TOLERANCE			NAME			DATE			RECOMMENDED LAYOUT OF MATING AND PCB BOARD VERTICAL TYPE (32PX2)				
MILLIMETER	INCH	ANGLE	DRAWN	Benny Chen	11/11/04	SCALE	SIZE	DRAWING NO.	REV	SHEET			
XX ±0.8	.XX ±0.03	±3°	CHECKED	Paul Wang	03/23/04	~	A4	10046971	F	2 OF 4			
X.XX ±0.25	.XXX ±0.010		APPROVED	Joseph Hsia	03/23/05								
X.XXX ±0.13	.XXXX ±0.005												

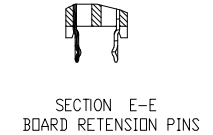
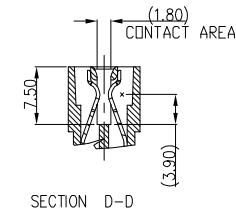
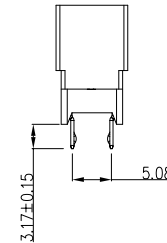
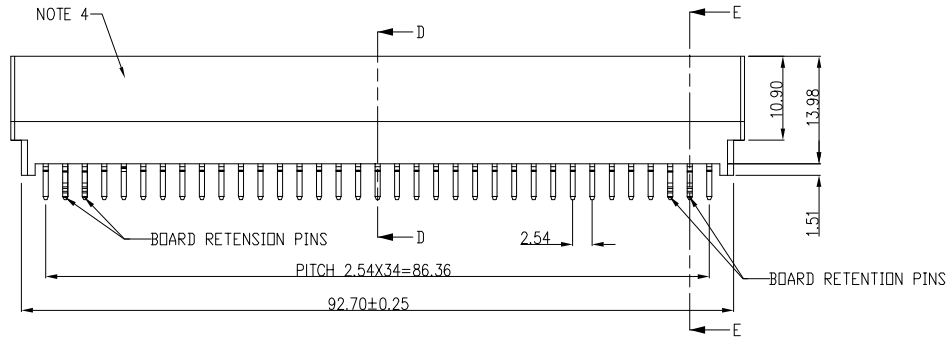
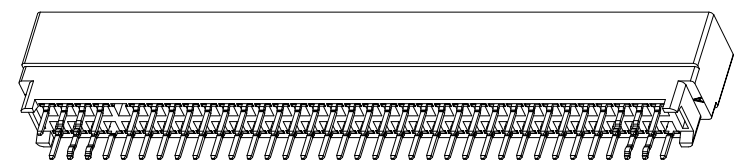
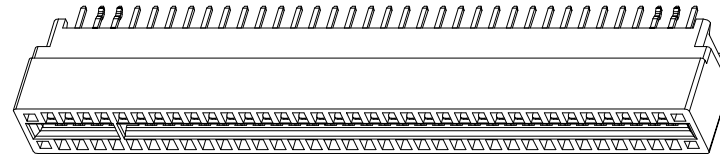
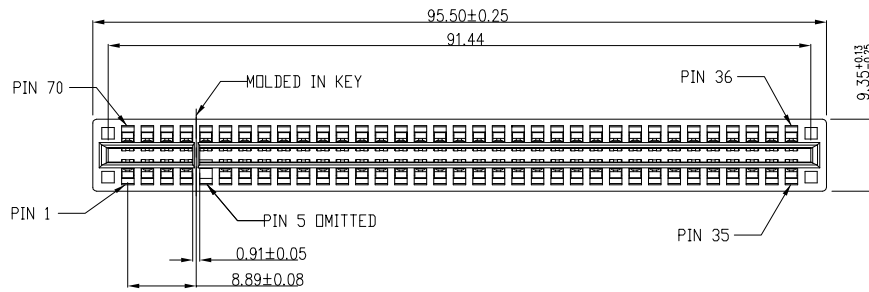
4 3 2 1

PDM: Rev:F

STATUS: Released

1 Printed: Mar 14, 2007

PRODUCT NO
10046971-003LF



NOTE:

1. MATERIAL:

HOUSING: HIGH TEMPERATURE THERMOPLASTIC,
UL 94 V-0 FLAME RETARDANT, BLACK.
TERMINAL: HIGH CONDUCTIVITY COPPER ALLOY.
PLATING SPEC AS BELOW:
Ni 50u" UNDER PLATED.
Au 30u" OVER CONTACT AREA. (ONE SIDE)
MATTE TIN 120u" OVER SOLDERING AREA.

2. PACKING SPEC. GS-14-937.
3. PRODUCT SPEC. GS-12-338.

4. MANUFACTURER'S NAME, P/N AND DATE CODE TO APPEAR ON THIS SURFACE
AS PER GS-24-007.

5. PART NUMBER 10046971-003LF MEETS EUROPEAN UNION DIRECTIVE AND OTHER COUNTRY
REGULATIONS AS DESCRIBED IN GS-22-008.
THE HOUSING WILL WITHSTAND EXPOSURE TO 260°C PEAK TEMPERATURE FOR 10 SECONDS IN A
WAVE SOLDER APPLICATION WITH A CIRCUIT BOARD.

ALL RIGHT RESERVED. REPRODUCTION OR ISSUE TO THIRD PARTIES IN ANY FORM WHATEVER IS NOT PERMITTED WITHOUT
WRITTEN AUTHORITY FROM THE PROPRIETOR. PROPERTY OF F C I. COPYRIGHT F C I.

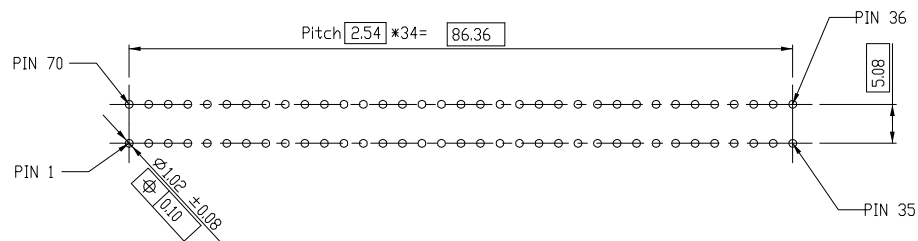
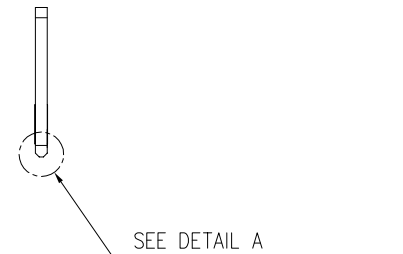
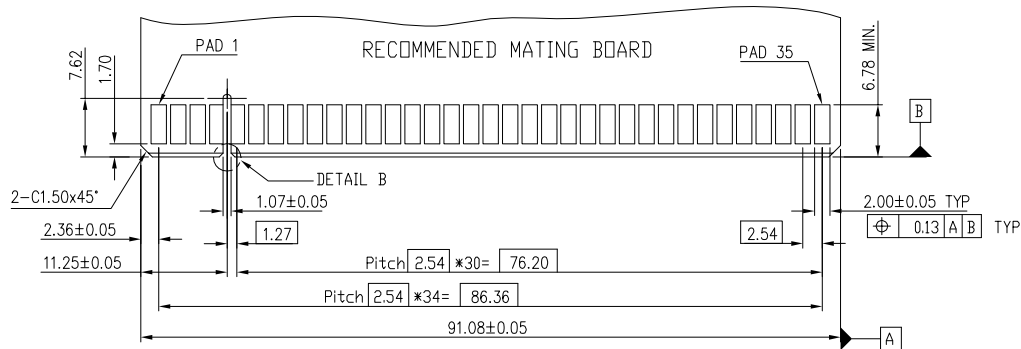
CUSTOMER COPY			THIRD ANGLE PROJECTION							
DO NOT SCALE DRAWING			NAME			DESCRIPTION				
GENERAL TOLERANCE			DATE			POWER EDGE CONNECTOR				
MILLIMETER	INCH	ANGLE	DRAWN	Benny Chen	01/27/05	VERTICAL TYPE (35PX2)				
X.X ±0.8	.XX ±0.03	±3°	CHECKED	Paul Wang	03/25/05	SCALE	SIZE	DRAWING NO.	REV	SHEET
X.XX ±0.25	.XXX ±0.010		APPROVED	Joseph Hsia	03/26/05	1:1	A4	10046971	F	3 OF
X.XXX ±0.13	.XXX ±0.005									

PDM: Rev:F

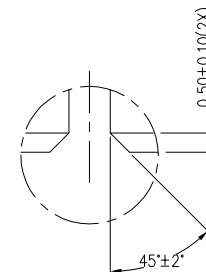
STATUS: Released

Printed: Mar 14, 2007

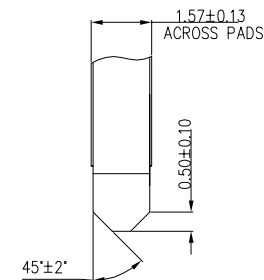
PRODUCT NO
10046971-003LF



RECOMMENDED PC BOARD LAYOUT
AND THE THICKNESS IS 2.36mm



DETAIL B
SCALE 5:1



DETAIL A
SCALE 5:1

ALL RIGHT RESERVED. REPRODUCTION OR ISSUE TO THIRD PARTIES IN ANY FORM WHATEVER IS NOT PERMITTED WITHOUT WRITTEN AUTHORITY FROM THE PROPRIETOR. PROPERTY OF F C I. COPYRIGHT F C I.

CUSTOMER COPY			THIRD ANGLE PROJECTION															
											DO NOT SCALE DRAWING			DIMENSIONAL LIMITS APPLY AFTER PLATING (IF SPECIFIED)			DESCRIPTION	
GENERAL TOLERANCE			NAME			DATE			RECOMMENDED LAYOUT OF MATING AND PCB BOARD VERTICAL TYPE (35PX2)									
MILLIMETER			DRAWN			Benny Chen								01/27/05				
INCH			CHECKED			Paul Wang			03/25/05			SCALE	SIZE	DRAWING NO.		REV	SHEET	
ANGLE			APPROVED			Joseph Hsia			03/26/05			~	A4	10046971		F	4 OF 4	
.XX ±0.8			.XX ±0.03			±3°												
.XXX ±0.25			.XXX ±0.010															
.XXX ±0.13			.XXX ±0.005															